



Sandusky County  
**Juvenile and  
Probate Court**

Calendar Year 2022

ANNUAL REPORT

Judge Brad Smith

6.27.2023

BS  
RZ  
SM

# Sandusky County Juvenile Court Annual Report

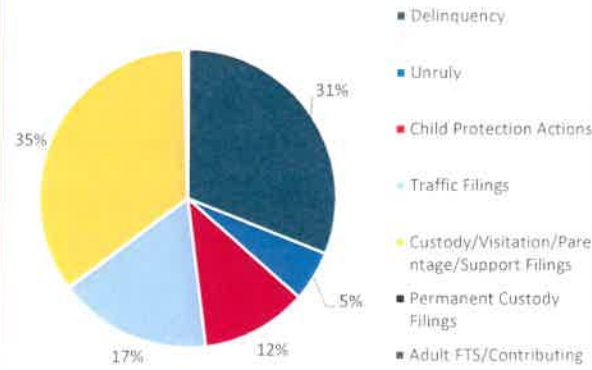


-Judge Brad Smith-

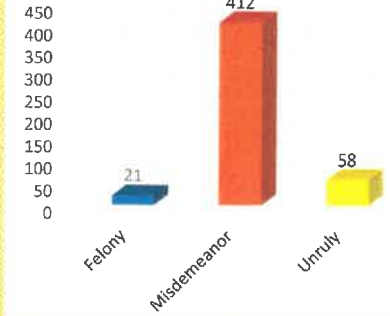
During calendar year 2022 the Juvenile Court saw a total of 1,500 offenses filed. Custody/Visitation/Parentage/Support filings were the case types with the highest volume having 522 offenses filed. There were 465 Delinquency offenses filed, as well 251 Traffic offenses filed and 173 Child Protection Actions filed.

## Calendar year 2022

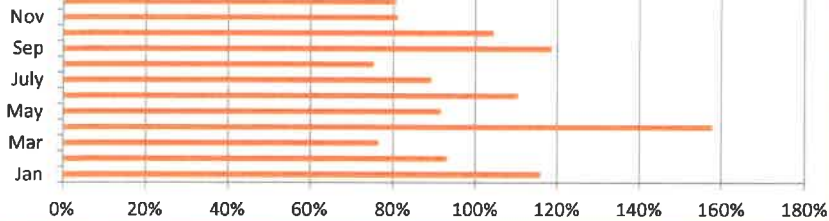
### Percentage of Offenses Filed in 2022



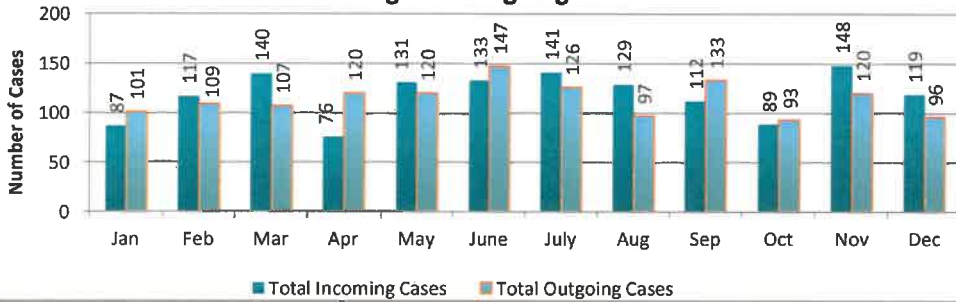
### 2022 Adjudications by Offense Level



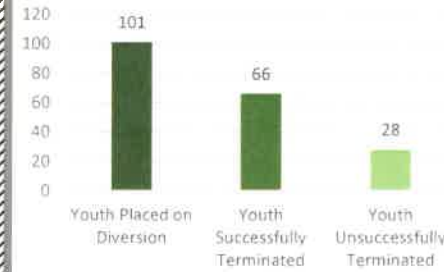
### Clearance Rates by Month 2022



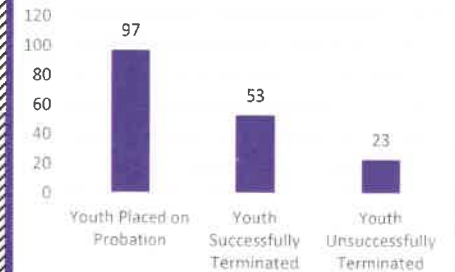
### Incoming and Outgoing Cases 2022



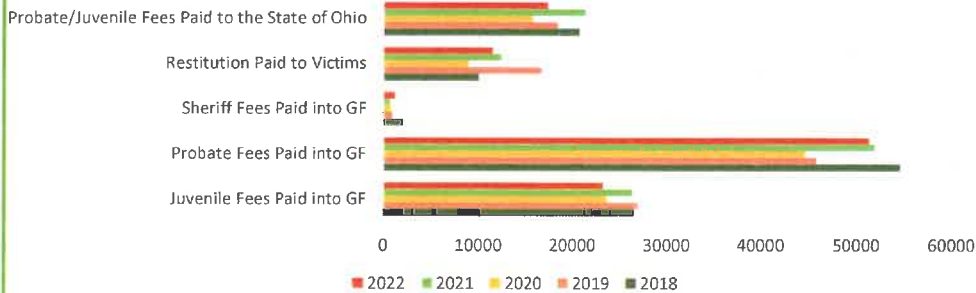
### Youth Placed on Diversion



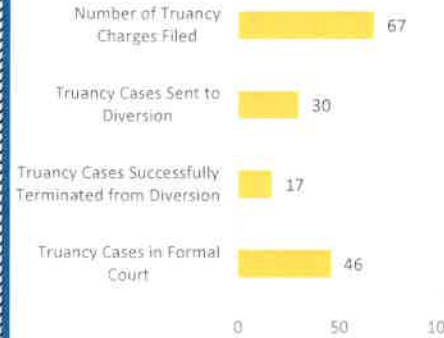
### Youth Placed on Probation



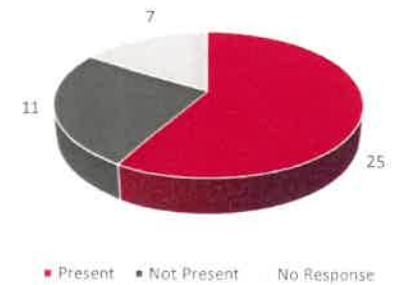
### Allocation of Court Fees



### Truancy Cases Filed



### In 2022 the Probation Department Completed 43 Curfew Checks on 42 Youth



*Judge Brad Smith 6/26/2023*

**CLEARANCE RATES:**

The clearance rates are the number of outgoing cases as a percentage of the number of incoming cases. The purpose of clearance rates is to measure whether the Court is keeping up with its incoming caseload. If cases are not disposed of in a timely manner, a backlog of cases awaiting disposition will grow. This measure is a single number that can be compared within the Court for any and all juvenile cases. Courts should aspire to clear (dispose of) at least as many cases as have been filed/reopened/reactivated by having a clearance rate of 100% or higher. The clearance rate is calculated by the sum of the incoming cases (new filings/reopened/ reactivated cases) divided by the sum of outgoing cases (closed cases).

**INCOMING CASES:**

The incoming cases are the total number of cases opened or reactivated in a given month. Reactivated cases are those that were closed and then reopened upon a new filing (for example: a shared parenting agreement was issued and the parties want to modify the agreement a year later, the case would be reactivated). This statistic is compiled and maintained pursuant to the Rules of Superintendence of the Supreme Court.

**OUTGOING CASES:**

The outgoing cases are the total number of cases closed for Supreme Court reporting purposes in a given month. Cases can close for the following reasons: Trial by Judge or Magistrate; Admission to Judge or Magistrate; Dismissal by Party, Judge or Prosecutor; Unavailability of Party for Trial; Certification or Waiver Granted (delinquency cases only); Transfer to Another Judge or Court; and Other Terminations (for example: referrals to mediation). This statistic is compiled and maintained pursuant to the Rules of Superintendence of the Supreme Court.

**ALLOCATION OF JUVENILE/PROBATE FEES:**

The Court continues to work diligently at collecting fines, fees and costs. The data in the chart depicts how the Juvenile Court contributes to the General Fund, through collection. The chart also reflects a combined contribution of Juvenile and Probate monies paid to the State of Ohio. Restitution collection can fluctuate depending upon the types of crimes and the amounts of reported damage by victims, overall the Court has worked diligently to improve its "payout" to victims. With all statistics, the numbers vacillate depending upon various factors, such as: law enforcement making arrests, the prosecutor filing charges, the parties ability to pay, and the economy, to name a few.

**PERCENTAGE OF OFFENSES:**

As stated, this data references offenses filed, not total cases filed. For example: if a child is charged with three misdemeanor offenses, they may have only one case number/filing but a total of three offenses for reporting purposes.

**YOUTH PLACED ON DIVERSION:**

The Diversion Program is designed for youth that have no prior Court involvement (a first time offender) and are before the Court for a misdemeanor or unruly offense. Youth can be referred to the Diversion Program by the Chief Probation Officer prior to a Court appearance or by the Judge/Magistrate after adjudication pursuant to Juvenile Rule 29(F). Youth placed on Diversion are subject to rules set by the Diversion Contract and can be required to participate in programming deemed appropriate by the Diversion Officer. While on Diversion the youth is subject to random drug screens, curfew checks, school visits, home visits and office visits. If the youth completes the requirements and no new charges are filed, the case against them is dismissed and sealed. If the youth fails to complete the terms of the Diversion contract within 6 months, the case is returned to Court for formal Court involvement.

**TRUANCY CASES FILED:**

Habitual Truant is defined as any compulsory school age child who is absent 30 or more consecutive hours without a legitimate excuse; absent 42 or more hours in one month without a legitimate excuse; absent 72 or more hours in one year without a legitimate excuse. This also includes 'excessive absences' if the child is absent 38 or more hours in one school month with or without a legitimate excuse; or absent 65 or more hours in one school year with or without a legitimate excuse. The purpose of HB 410 was to decriminalize school truancy, require the schools to provide additional intervention to prevent filing charges and when filed the Court is required to use informal interventions like Diversion.

**ADJUDICATIONS BY OFFENSE LEVEL:**

Adjudication is defined as giving or pronouncing a judgment or decree. In Juvenile Court, delinquency offenses are classified as a misdemeanor or felony. Unruly offenses are those that are not considered a "crime" if committed by an adult (for example: curfew and school truancy).

**YOUTH PLACED ON PROBATION:**

Due to cases that carry over from year to year you will notice that the number of terminations do not total the number of youth placed on probation during the calendar year we are reporting on. Youth that are terminated unsuccessfully are done so for a number of reasons, some examples being that they reached the age of majority (18), they were placed at the Ohio Department of Youth Services, or the Court feels that they have reached the maximum benefit. While on Probation, youth are assigned to a Probation Officer who supervises their case. Probation insures that the youth is complying with the rules set by the Court, completing the programming that is required and remaining law abiding. When the youth has completed the requirements of Probation their Probation Officer files a motion with the Court asking for their Probation to be terminated.

**CURFEW CHECKS:**

While on Probation and/or Diversion all youth are subject to random, unannounced curfew checks. Probation Officers conduct curfew checks by geographical area as assigned by the Chief Probation Officer. The County is divided geographically East (Bellevue and Clyde), Central (Fremont), and West (Gibsonburg, Burgoon and Woodville). Probation Officers will conduct curfew checks in pairs, one male and one female. When conducting checks on female probationers, the female Probation Officer will initiate the contact and vice versa when they are conducting a check on a male probationer. At the time of the curfew check, Probation is required to physically see the youth in question. If the youth is not present, a curfew check slip is left at the residence with instructions about what they are required to do when they get home and Probation will follow up with the family the next business day.